

AUCTION

TIMED ONLINE

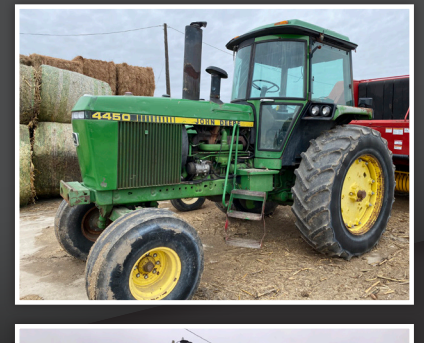


Equipment located at: Cartersville Elevator lot, 1603 South Eisenhower Avenue, Mason City, IA

Opens: Thur., June 4 / Closes: Thursday, June 11, 2020 AT 1PM

AUCTIONEER'S NOTE: Come and inspect the equipment on inspection day then bid from home on your phone or computer! Sales tax applies, exemption forms available. \$35 pc per titled item. All items to be removed within 7 days.

Inspection Day: Wednesday, June 10th from 9AM-3PM



CONSIGNED BY CULLEY CARUTH, 641.640.0600
TRACK TRACTOR
1997 John Deere 8400T, 6,260 hrs., track tractor, powershift, standard cab, 4 hyd., 3 pt., w/quick hitch, Lg. 1000 PTO, field office, (20) front weights, (8410T decals), 24" belts, 72" spacing, S/N RW8400T902137

CONSIGNED BY PHIL ELLER, 641.640.0328
4WD TRACTOR
2005 Case-IH STX375 HD Steiger, 9,252 hrs., 4WD, powershift, 4 hyd., BB, Cummins QSX15, 16 speed, buddy seat, (new) AC compressor, 20.8R42 duals front & rear, S/N JEE0107260

COMBINE & HEADS
1996 Case-IH 2188, axial flow, 3,109 sep./4,342 eng. hrs., 2WD, Field Tracker, buddy seat, rock trap, 3 speed hydro, chopper, chaff spreader, reverser, hopper ext., Ag Leader wiring, 30.5L-32 fronts, 14.9-24 rears, S/N JJC0192292

UNVERFERHT HT30, head trailer, 30', 4-wheel, lights, 7.5-10 tires
Head Trailer, 2030, 30', 4-wheel, ST205/75D tires

PLANTER & TILLAGE
Case-IH 900, cyclo air planter, 12x30", bi-fold, center fill, Yetter row cleaners, Case-IH monitor
Case-IH 730C Ecolo-Tiger, disc ripper, 7-shank, 10" wing points, 30" spacing, (6) lead shanks w/5" wing tips, rock flex single front discs, Jay Cox disc leveler, hyd. wings, model # ET30C7, 16.5L-16.1 tires, S/N JFH0032342

CONSIGNED BY TOM HILTS, 515.231.3166
2WD TRACTOR
1976 Ford 5600, 2,075 original hrs., 2WD, CAH, 2 hyd., 3 pt., 540 PTO, rock box, diff. lock, 16.9x30 rear tires,

CONSIGNED BY STEVE MEISSNER, 712.441.6650
2WD TRACTORS
1983 John Deere 4450, 9,712 hrs., 2WD, powershift, CAH, 3 hyd., 3 pt., 540/1000 PTO, K&M step, 18.4-38 rears w/luid, 14.5L-16.1SL fronts, S/N RW4450P005845

MANURE SPREADERS
Kuhn Knight 8024 Slinger, manure spreader, 1000 PTO, Pro Twin Slinger, 2,400 gal. capacity, LH discharge, tandem axle, 385/65R22.5 tires, S/N 0907

BALER & MIXER
New Holland BR780A, round baler, 5'x6', twine & net wrap, 1000 PTO, 13,066 bales, Bale Command Plus monitor, 31x13.50 NHS tires, S/N Y6N015141

CONSIGNED BY BRIAN & HEIDI LANTZKY, 563.380.8372
MFWD TRACTOR
1979 Deutz DX140 Powermatic, 4,356 hrs., MFWD, cab, 2 hyd., 3 pt., 1000 PTO, rock box, 20.8-38 rears, 14.9-28 fronts, S/N 76230852

MIXER
Patz V615, vertical mixer, 1000 PTO, hyd. drive, drag chain discharge, STAD 04 scale head, tandems, 12.5L-15 tires, S/N V100-615-1603-DQ

CONSIGNED BY CURTIS CHRISTOPHERSON, 641.425.0070
CORN HEAD & PLANTER
2010 Lexion C512-30, corn head, 12x30", hyd. deck plates, knife rolls, AutoPilot, head height sensor wands, S/N 91801776

CONSIGNED BY ALFRED KAPPENMAN, 701.349.3413
AUGER
Westfield MK100-91, swing hopper, 10'x91', 540 PTO, hyd. cable lift, 9.5L-15 tires, S/N 11969

CONSIGNED BY WES STOLEE, 515.290.3580
2WD TRACTORS
1974 John Deere 4430, shows 5,770 hrs., 2WD, quad range, CAH, 2 hyd., 3 pt., 540/1000 PTO, 8-bolt front hubs, hub duals, aux. fuel tank, 18.4-38 tires, front suitcase weights, S/N 024894R

COMBINE & HEADS
1997 John Deere 9500, 2,551 sep./3,794 eng. hrs., 2WD, (new) drive belt, feeder house fan, chopper, chaff spreader, rock trap, reverser, Ag Leader monitor, S/N H09500X672822

TILLAGE
2006 Glencoe 7400 SS Soil Saver, disc chisel, 9-shank, curved shank, reversible curved tips, S/N 4369

WAGONS & GRAIN CART
2001 Brent 544, windows, brakes, lights, truck tires, S/N B18840131

CONSIGNED BY BART ZUBER, 319.330.6564
FEED TRUCK
1994 Ford L9000, shows 444,443 miles, feed truck, Caterpillar C10, 335 hp., Eaton Fuller, 13 speed, tandem axle, air ride suspension, CEI Pacer A35HCL 6-section 15T 28' feed body, 58,000 GVWR, air slide cover, S/N A35HCL-20-828, alum. fuel tank, (new) hyd. pump, 11R22.5 on steel drive tires, 425/65R22.5 on steel steer tires, VIN 1FDZY90S8RVA08283

CONSIGNED BY ALFRED KAPPENMAN, 701.349.3413
AUGER
Westfield MK100-91, swing hopper, 10'x91', 540 PTO, hyd. cable lift, 9.5L-15 tires, S/N 11969

CONSIGNED BY JUSTIN STOUT, 641.660.5533
DOZER & EXCAVATOR
2006 Caterpillar D6R LGP, dozer, 13,422 hrs., Caterpillar C-9, CAH, 12' 6", straight blade, 4-way, (new) ECM module, (new) gears in both drives, S/N OADE01126

SKID STEER & LIFT
2004 Caterpillar 257B, track skid steer, CAH, ISO controls, turbo, aux. hyd., hyd. quick tach, 14" belts, S/N CAT0257BESL01732

MANURE SPREADER
J-Star 7200 Auto-Trac 465720-1, liquid manure tank, triple axle, 7,200 gal., 7-shank Dietrich Series 50 Auto Reset Slurry injector, Krohne flow meter, (new) interior stiffeners in 2018, 28L-26R3 tires, S/N 2803363

TRAILERS
1970 Miller Tilt-Top OTG, tandem axle, 34'x8', manual tilt, 44,000 lb. capacity, S/N 11911

CONSIGNED BY CHRISTIAN FARMS, 515.231.3184
DAY CABS
1990 Volvo/White, 400,000 miles, day cab, Cummins LTA10, Eaton Fuller, 9 speed, single axle, spring suspension, dual fuel tanks, 22.5 tires, VIN 2271EY03202101

CONSIGNED BY ANDREW BARTEL, 641.430.7799
DISC CHISEL & MOWER
Sunflower 4311-10, disc chisel, 10', 5-shank, pull-type, rock flex front discs, rigid scrapers, 12.5L-15 and 13.50-15 tires, S/N 4392-041

WOODS BRUSH BULL 84, rotary mower, 84" 540 PTO, 3 pt., single laminated tail wheel, S/N 780505

SECURED LENDER CONTACT DUANE NORTON OF STEFFES GROUP, 515.450.7778
VEHICLES & ELECTRICAL
2018 Dodge 2500 Promaster, 21,583 miles, 2WD, 6.0L gas, auto, commercial cargo van, 180" WB, bucket seats, power windows & mirrors, cruise, rear cargo doors, curb slide side door, (interior set up for electric supplies), 225/75R16 tires, VIN 3C6TRVDG7JE111913

2014 Dodge 2500 Promaster, 46,630 miles, 2WD, 6.0L gas, auto, commercial cargo van, 180" WB, bucket seats, power windows & mirrors, cruise, rear cargo doors, curb slide side door, (interior set up for electric supplies), 225/75R16 tires, VIN 3C6TRVDG6EE107874

2014 Dodge 2500 Promaster, 51,644 miles, 2WD, 6.0L gas, auto, commercial cargo van, 180" WB, bucket seats, power windows & mirrors, cruise, rear cargo doors, curb slide side door, (interior set up for electric supplies), 225/75R16 tires, VIN 3C6TRVDG1EE107880

2002 Chevrolet 3500HD, 134,602 miles, 2WD, 6.5L Turbo diesel, auto, bucket truck, split bench vinyl interior, Attech body w/200A boom, 300 lb. capacity, 30.6' max platform height, S/N 1002BV10063, 225/70R19.5 tires, VIN 3GBK34FX2M12938

SECURED LENDER CONTACT DUANE NORTON OF STEFFES GROUP, 515.450.7778
DRILL
Great Plains Solid Stand 15, drill, 15', 3 pt., ground-driven, double disc openers, rubber closing wheels, dual down pressure springs, grass seed hopper, dual lift wheels, single gauge wheels, acre counter, 2-bar coil tine harrow, 9.5L-15 tires, S/N GP-3665C

PICKUPS
2005 Dodge Ram 3500 SLT, 213,363 miles, 4WD, diesel, 6 speed, crew cab, cloth interior, A/C, tilt wheel, AM/FM/CD, cruise, cab steps, gooseneck ball hitch, LT235/80R17 tires, rear duals, VIN 3D7MS48C85G724528

2003 Dodge Ram 3500, 276,181 miles, 4WD, diesel, 6 speed, crew cab, cloth interior, A/C, tilt wheel, AM/FM/cassette, cruise, cab steps, gooseneck ball hitch, trailer brake controller, LT 235/80R17 tires, rear duals, VIN 3D7MU48C93G801124

